

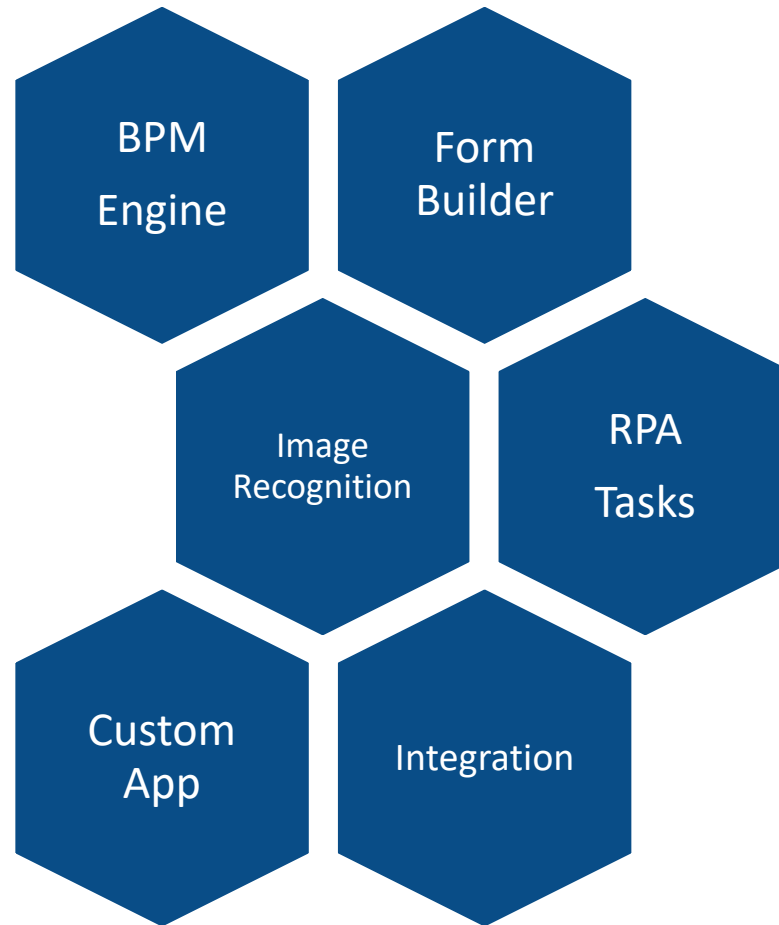
# GPA Gruppo Progetti Avanzati

*Enterprise Information Technology Solutions*







## Alexandry<sup>A</sup>

Digital Process Management

## 2 WEB APP BUILDER



# Alexandry <sup>A</sup> V2.0

 <p><b>Modeler</b> Design Process, Case and Form</p> <p>Open</p>	 <p><b>Task</b> Perform your activities</p> <p>Open</p>	 <p><b>Capture</b> Document Extraction</p> <p>Open</p>
 <p><b>DMS</b> Document management system</p> <p>Open</p>	 <p><b>User Manager</b> Manage Users, roles and privileges</p> <p>Open</p>	 <p><b>Administration</b> Manage System</p> <p>Open</p>

Copyright © GPA Gruppo Progetti Avanzati Srl 2018

# 4 MODELER – UI

1

## Barra degli strumenti

- Salva il processo
- Cambia visualizzazione del processo
- Valida il processo
- Disegna linee del processo

2

## Barra azioni

Da qui è possibile aggiungere al processo nuovi eventi, attività, strutture, etc...

3

## Area di dettaglio

- Visualizza le tutti i dettagli per l'unità selezionata

The screenshot displays the Alexandry Workflow Modeler interface. At the top, there is a navigation bar with tabs for PROCESSES, CASE MODELS, FORMS, DECISION TABLES, and APPS. Below this is a toolbar with various icons for file operations and process editing. On the left, a 'Process Navigator' sidebar lists categories like Start Events, Activities, Structural, Gateways, Boundary Events, Intermediate Catching Events, Intermediate Throwing Events, End Events, Swimlanes, and Artifacts. The main workspace, labeled 'Area di lavoro', shows a BPMN diagram for a 'Vacation Request' process. The process starts with a start event, followed by 'Provide vacation information', 'Calculate number of days', and 'Is Manager approval needed?'. A decision gateway 'Approval needed?' branches into 'Approval needed' (leading to 'Manager approval') and 'No approval needed'. Both paths merge at another decision gateway before reaching the end event. A callout box '4' points to the 'Approval needed?' gateway. At the bottom, a 'Process Navigator' shows the selected process 'Vacation Request' with details:

Process identifier :	vacationRequest	Name :	Vacation Request
Documentation :	A vacation request p ...	Process author :	No value
Process version string (documentation only) :	No value	Target namespace :	http://www.flowable....
Data Objects :	No data objects configured	Is executable :	<input checked="" type="checkbox"/>
Event listeners :	No event listeners configured	Execution listeners :	No execution listeners configured
Message definitions :	No message definitions	Signal definitions :	No signal definitions configured
		Potential starter user :	No value

The screenshot shows the 'Alexandry Workflow' application interface. At the top, there is a navigation bar with tabs for 'TASKS', 'PROCESSES', and 'CASES'. The 'TASKS' tab is active. Below the navigation bar, there are two main panels. The left panel, titled 'Showing your tasks, no filter applied', contains a list of tasks. The right panel, titled 'Provide vacation information', shows the details of a selected task, including the assignee, due date, and a form for entering vacation information.

**Alexandry Workflow** | TASKS | PROCESSES | CASES

Showing your tasks, no filter applied

+ Create Task | Newest first

Provide vacation information | Created 17 hours ago  
This task has no description  
Assigned to Test Administrator

Provide vacation information | Created 17 hours ago  
This task has no description  
Assigned to Test Administrator

**Provide vacation information** | Save | Complete

Assignee: Test Administrator | Due: No due date  
Part of process: Vacation Request - February 27th 2018

UT | No content items | No comments | Show details

Name \*

Vacation starting from \* (d-M-yyyy)

Vacation until \* (d-M-yyyy)

Reamrks

Save | Complete

1

**Area di selezione**

Qui è possibile selezionare il task che si vuole lavorare tra quelli assegnati

2

**Area di lavoro**

Qui è possibile inserire i dati richiesti dal task e dichiararlo completato

1

Area Informazioni

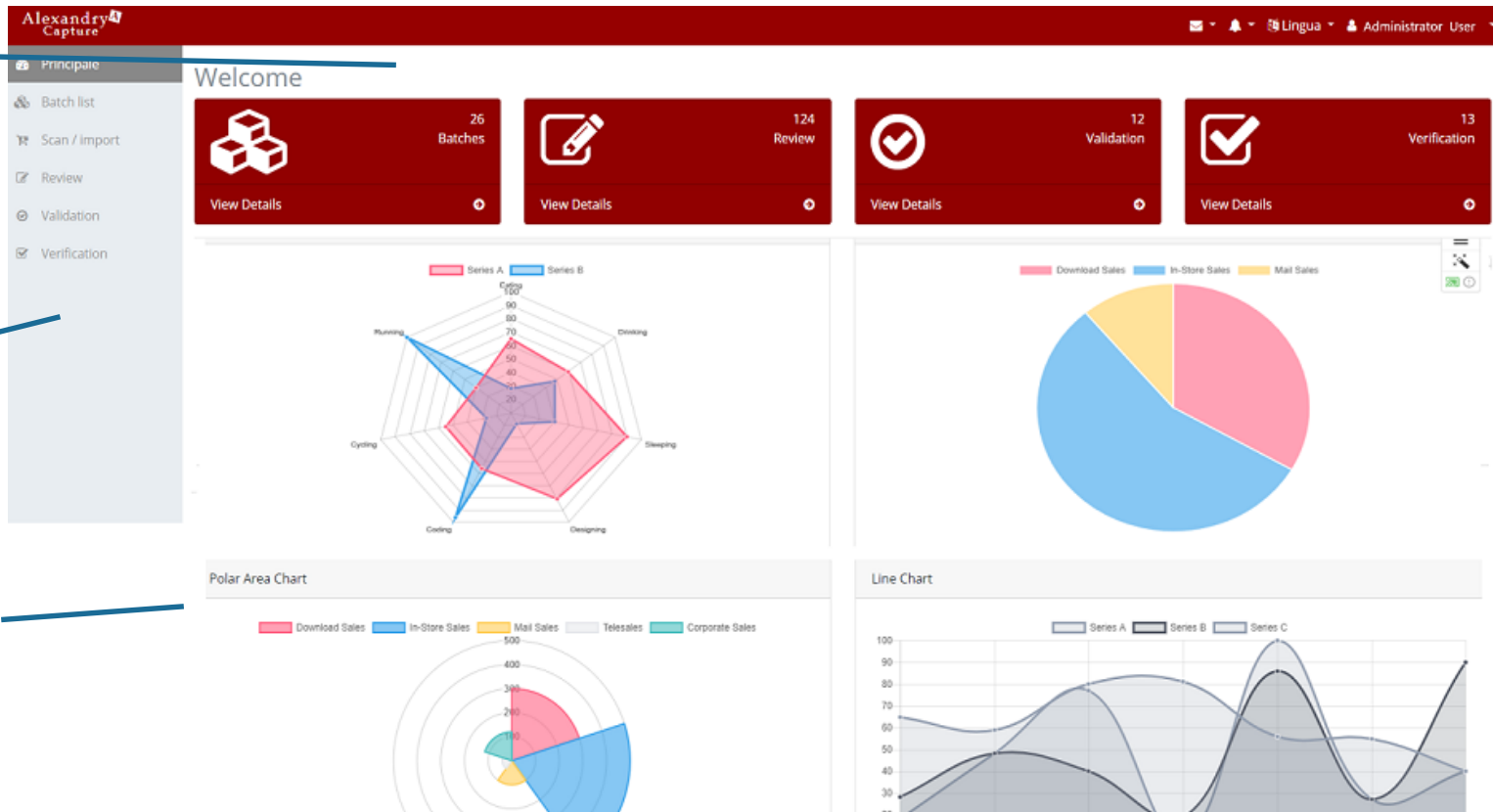
2

Barra azioni

Da qui è possibile accedere a tutte le sezioni di lavorazione

3

Area di lavoro



# 7 USER MANAGER – UI

**Alexandry<sup>4</sup>**    **USERS**    **GROUPS**    **PRIVILEGES**

Access identity management application

Access modeler application

Access admin application

**Access the workflow application**

Access the workflow application

Users    **Groups**

Add a user

ID	Email	Name	
admin	admin@flowable.org	Test Administrator	🗑️
user1	user1@gpagroup.it	user1 test	🗑️

1

### Barra privilegi

Da qui è possibile selezionare il tipo di privilegio che si vuole assegnare agli utenti

2

### Area di lavoro

Qui è possibile aggiungere o rimuovere il privilegio selezionato a qualsiasi utente

Alexandry<sup>A</sup> Workflow

PROCESS ENGINE    FORM ENGINE    DMN ENGINE    CONTENT ENGINE

DEPLOYMENTS    DEFINITIONS    INSTANCES    TASKS    JOBS    EVENT SUBSCRIPTIONS

**Process instances** 🔄 Show 25 results Show 25 results ⌵

Showing 4 results, from a total of 4 matching process instances.

ID	Business key	Process definition	Created	Ended
112		Vacation Request	Feb 27, 2018 5:32 ...	Feb 27, 2018 5:34 PM
22		Vacation Request	Feb 27, 2018 5:16 ...	
54		Vacation Request	Feb 27, 2018 5:26 ...	
86		Vacation Request	Feb 27, 2018 5:30 ...	Feb 27, 2018 5:31 PM

**Filters** Clear filters +

Process definition

Status

**1**

**Scruscotto processi**  
 Da qui è possibile visualizzare tutte le istanze dei processi ed accedere nel dettaglio

**2**

**Filtri**  
 Da qui è possibile impostare i filtri per la visualizzazione delle istanze dei processi



# DETTAGLI SULLA TECNOLOGIA

Technology and key features	
SW platform	Java Application servers Application Image enhancement functionalities: GPA software (Java, C)
Supported OS	Linux, Windows
Architecture	Web, server or cloud-based
SW development	multi-platform-Java, C
DBMS	Open Source: MySql, Postgres, H2, MongoDB Proprietary: Oracle, DB2, MS SQL Server
Recognition Engine (OCR, ICR)	Both Open source and proprietary engine supported
Document procesing workflow	BPM (Using Flowable, an open source BPM platform)
Content management	DMS (document management system) with image storage & retrieval
Integration	Legacy systems, custom exports using standard RESTful API and ESB (using open source Apache Service Mix)
Image enhancement	Advanced functionality (De-speckle, De-skewing, line drop out, thresholding, post scan image enhancements); Fully customizable (using OpenCV, an open source computer vision library)

# GPA Gruppo Progetti Avanzati

Registered office

**Via Ferdinando Galiani, 68  
00191 Roma Italia**

Operational headquarters

**Piazzale Asia, 21  
00144 Roma Italia**

phone

**+39.06.5913.642**

fax

**+39.06.5912527**